

WH-110/ WH-H230/ WH-H260 Network Camera

Hardware User Manual



Notices

This user manual is intended for administrator and user of IP network cameras. Operational instructions & network configuration are elaborated. Prior knowledge about network setup and configuration will be helpful.

IMPORTANT

- Check **PC** specification requirements.
- Check **OS** platform requirements.
- Install **NVR2** video surveillance software before you start working with IP network camera.
- Read special notes and important configuration information.

TABLE OF CONTENTS

1. INTRODUCTION

1.1 PRODUCT OVERVIEW

WH-110/ WH-H230/ WH-H260 fixed IP network camera is a professional IP surveillance application. With embedded web viewer, streaming video/audio over network can be accessed like browsing a website. It is also capable of encoding MPEG4 stream, the only digital surveillance product in the market with proprietary design for "Ease-of-use", "Reliability", and "Manageability".

1.2 PACKAGE CONTENTS

IP Camera



Software CD



Power connector

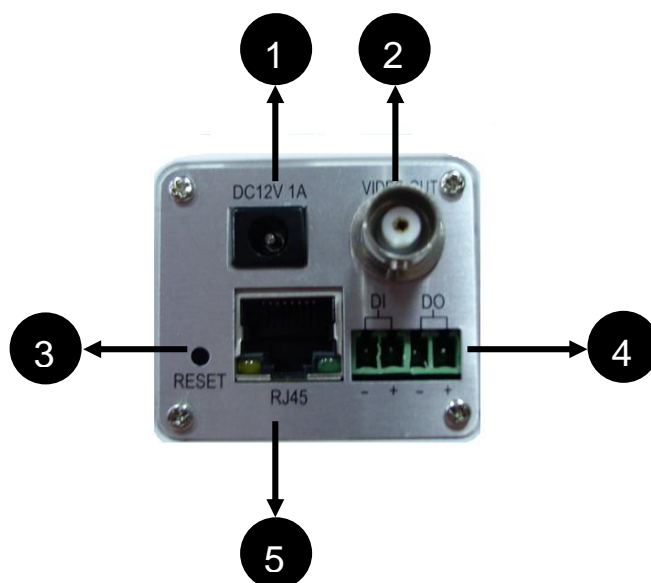


Power Adaptor



1.3 PHYSICAL DESCRIPTION

Back Panel



1. **Power Socket**
DC12V 1A
2. **Video Out**
3. **Reset Button**
4. **LAN/WAN RJ45 Port**
10/100 Mbps auto sensing, fast Ethernet port for secure
Local Network or WAN for FTTH or xDSL connectivity
5. **DI/DO**
DO: Logic Level 0: 0~0.5V; Logic Level 1: 2.8~3.3V

Side Panel



1. Auto Iris

2. V.D D.D

Video Driver or Digital Driver

3. VR

Variable Resistant adjustment

4. DIP Switches for CCD Functions

Auto Electronic Shutter Speed Mode

AES On 1/50 (60) sec. ~ 1/100,000 sec;

AES Off: 1/50 (60) sec.

Back Light Compensation

ON/OFF (Switchable)

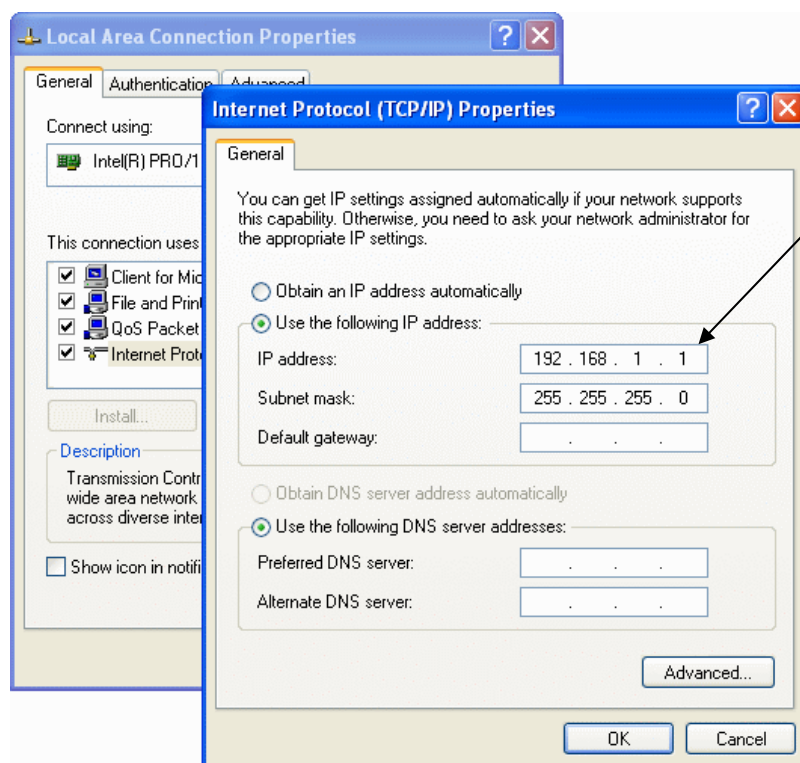
Flickless

ON/OFF (Switchable)

2 Hardware Installation

Make sure network environment

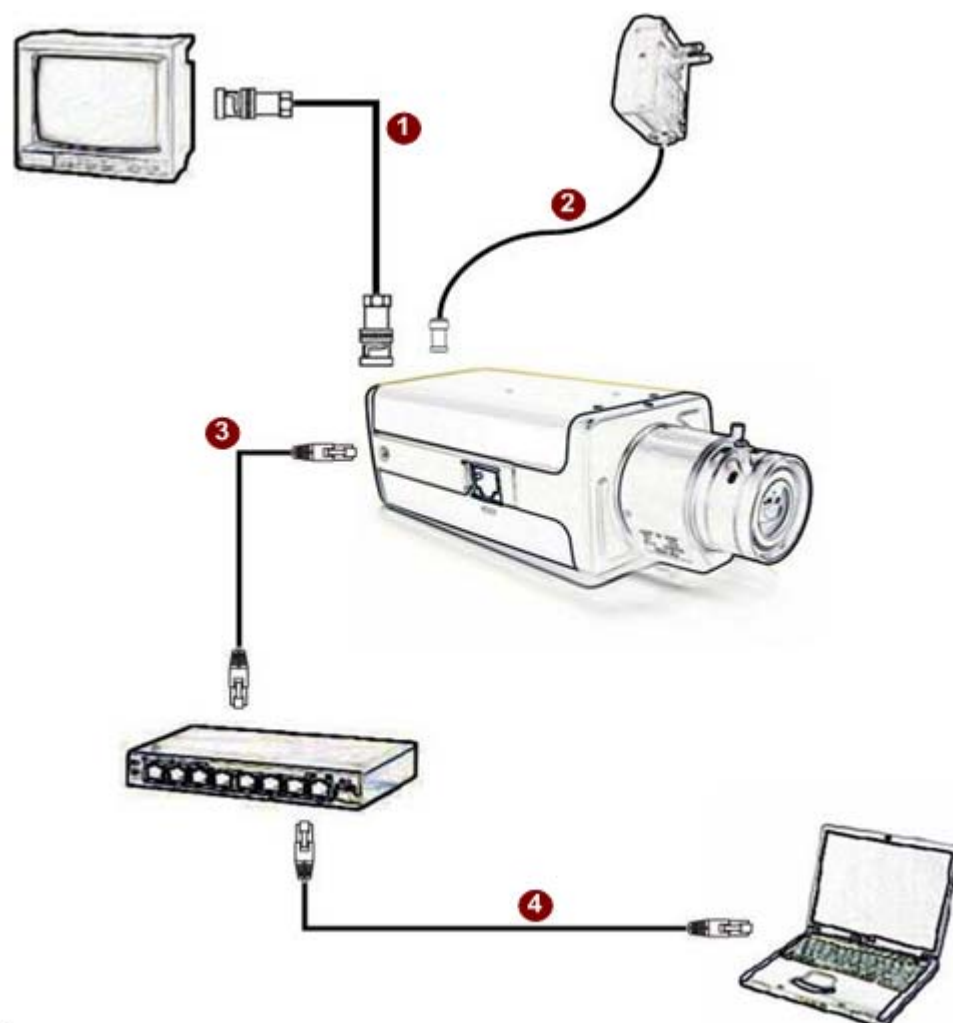
Default IP of IP network camera is 192.168.1.2 Please make sure IP network camera and your PC are in the same network segment before running the installation.



Please set the number
from 2 to 254.
e.g. **192.168.1.115**

Connect necessary cables

The Ethernet cable and power cable are necessary for previewing function.
Make sure all cables are correctly and firmly connected.



1. Connect an analog monitor to IP network camera Video Out (BNC connector)
2. Connect the power adaptor to IP network camera
3. Connect IP Camera LAN/WAN port to an Ethernet hub (RJ45 connectors)
4. Connect a PC to the Ethernet hub (RJ45 connectors)

3. SOFTWARE CD

Software CD in the package contains the following:

- I. **NVR2** IP video surveillance software
- II. NVR video surveillance software User Manual
- III. Firmware binary file
- IV. IP Network Camera Manual
- V. IP Setting

4. BEFORE YOU INSTALL SOFTWARE

- PC running Microsoft Windows 2000 or above is only capable of running NVR2 video surveillance software.
- PLEASE go through NVR user's manual before installation to check further PC requirements in order to ensure smooth software operation.

5. LANGUAGE SUPPORT

Chinese Traditional 、 English 、 French Standard 、 German 、 Italian 、
Portuguese 、 Turkish

NOTE

NVR setup will auto-run when inserting CD. Pay attention to dialog box questions before you press **OK** button.

World Helmsman Technology Co., Ltd.

3F-5, No.81, Sec.1, Hsin Tai Wu Rd., Hsichih,
Taipei Hsien 22101, TAIWAN

Tel: +886-2-2906-0816 Fax: +886-2-2904-1360

sales@wh-tech.com

www.wh-tech.com