

# WH-V360 Pan/Tilt/Zoom CCTV camera

## 36x Optical zoom, High speed dome camera

The WH-V360 Pan/Tilt/Zoom CCTV camera is high sensitivity video surveillance camera, integrated high speed pan/tilt ability, ideal for 360 degree video surveillance, application such as store and public area.

The WH-V360 Pan/Tilt/Zoom CCTV camera is high resolution up to 530 TV line, provide clear image and true color reproduction.

The WH-V360 PTZ camera combines innovation technology and performance well-suited for wide range video surveillance application.



### Quality Assurance

- Green design
- Corrosion proof
- Improved blower and heater
- 100% passed durability test
- Innovated and practical design
- Temperature test, voltage protective test

### Highlights

- ▶ Sharp **530** TV Lines
- ▶ Advanced Day& Night Function
- ▶ Rotation speed is a high 380° per second
- ▶ WDR (Wide Dynamic Range)
- ▶ DSS (Digital Slow Shutter)
- ▶ Powerful **Pan/Tilt/Zoom** function
- ▶ Vandal-Proof Dome Cove (Max load 380kg)
- ▶ High definition **36x optical zoom**
- ▶ Dual **MPEG4 & MJPEG** stream compression
- ▶ Protection Classification **IP 66** to DIN EN 60529



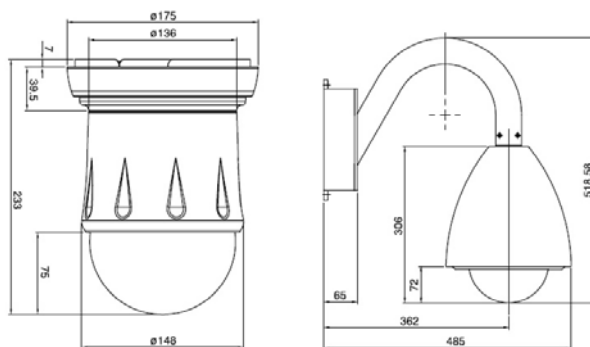
### **Powerful 36x Optical Zoom**

- Auto Iris and Auto Focus
- Superb optical design
- High contrast images
- Wider dynamic range

<b>Image System</b>	
<b>Image Sensor</b>	1/4" Ex-View CCD
<b>Picture Pixels</b>	NTSC: 410,000. pixels PAL: 470,000. pixels
<b>Picture Elements</b>	NTSC: 811 x 508 PAL: 795 x 596
<b>Video</b>	
<b>Sync-sync</b>	Internal / External
<b>Lens</b>	f=3.4mm to 122.4mm F=1.6 to 3.8
<b>Angle of Viewing (H)</b>	Wide 57.8° Tele 1.7°
<b>Optical Zoom</b>	36x Optical Zoom
<b>Digital Zoom</b>	12x (432x Digital Zoom)
<b>Focus system</b>	Auto / Manual
<b>Iris system</b>	Auto / Manual
<b>H-Resolution</b>	530TV Lines at NTSC/ PAL
<b>Min illumination</b>	1.4Lux at F1.6 in Color; 0.01Lux at F1.6 in B/W
<b>S/N ratio</b>	More than 50 dB
<b>Shutter</b>	Auto , 1/3(4)~1/10,000.sec
<b>Wide Dynamic Range</b>	Yes
<b>Digital Slow Shutter</b>	Yes
<b>Day &amp; Night</b>	Yes
<b>I/O Interface</b>	
<b>Analog Video Output</b>	BNC connector x 1

Pan / Tilt	
Pan movement	0° ~ 360° continuous endless
Tilt movement	0° ~ 90°
Pan manual speed	0.5°/Sec to 80°/Sec vari-speed
Tilt manual speed	0.5°/Sec to 40°/Sec vari-speed
Preset	128 preset point
Preset Speed	380° per second
Power	
Power	20Vac ~40Vac, 24Vac (Power consumption 45W)
Operating environment	
Operating Temperature	-40 °C ~ 50 °C (-40 ~ 122°F)
Storage Temperature	-40 °C ~ 85 °C (-40 ~ 185°F)
Humidity	5% ~ 95%
Dimension (Ø x H)	Outdoor: 246 mm x 306 mm Indoor: 175mm x 233mm
Outdoor Protected	IP 66 to DIN EN 60529
EMI	
CE, UL	

### Dimensions:



**WH**™  
WORLD HELMSMAN



**World Helmsman Technology Co., Ltd.**

3F-5, No. 81, Sec. 1, Hsin Tai Wu Rd., Hsichih,  
Taipei Hsien 22101, Taiwan

Tel: +886-2-2906-0816 Fax: +886-2-2904-1360

[www.wh-tech.com](http://www.wh-tech.com) / Email: [sales@wh-tech.com](mailto:sales@wh-tech.com)

■ DISTRIBUTED BY **CE FC**

