

WH-V270 Pan/Tilt/Zoom CCTV camera

27x Optical zoom, Indoor day/night surveillance

The WH-V270 Pan/Tilt/Zoom CCTV camera is combine cost-effective and performance, well-suited for indoor condition and day and night video surveillance requirement.

The WH-V270 PTZ camera with built-in IR cut filter ability, increase optimal surveillance performance in low light situations. The WH-V270 pan/tilt/zoom CCTV camera with powerful 27x optical zoom and 360 degree surveillance ability, capture more detail and clear image.



Quality Assurance

- Green design
- Corrosion proof
- Improved blower and heater
- 100% passed durability test
- Innovated and practical design
- Temperature test, voltage protective test

Highlights

- ▶ Sharp 480 TV Lines
- ▶ Advanced Day& Night Function
- ▶ Rotation speed is a high 180° per second
- ▶ WDR (Wide Dynamic Range)
- ▶ DSS (Digital Slow Shutter)
- ▶ Powerful **Pan/Tilt/Zoom** function
- ▶ Vandal-Proof Dome Cove (Max load 380kg)
- ▶ Superb optical design (27x Optical Zoom)
- ▶ Dual **MPEG4 & MJPEG** stream compression
- ▶ Protection Classification **IP 66** to DIN EN 60529



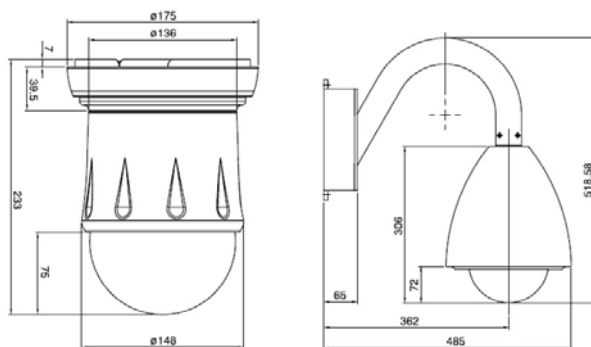
Powerful 27x Optical Zoom

- Auto Iris and Auto Focus
- Superb optical design
- High contrast images
- Wider dynamic range

Image System	
Image Sensor	1/4" Ex-View CCD
Picture Pixels	NTSC: 410,000. pixels PAL: 470,000. pixels
Picture Elements	NTSC: 811 x 508 PAL: 795 x 596
Video	
Sync-sync	Internal / External
Lens	f=3.25mm to 88.0mm F=1.5 to 3.8
Angle of Viewing (H)	Wide 53.2° Tele 2.1°
Optical Zoom	27x Optical Zoom
Digital Zoom	10x (270x Digital Zoom)
Focus system	Auto / Manual
Iris system	Auto / Manual
H-Resolution	480TV Lines at NTSC/ PAL
Min illumination	1.0Lux at F1.5 in Color; 0.01Lux at F1.5 in B/W
S/N ratio	More than 48 dB
Shutter	Auto , 1/50(1/60)~1/10,000.sec
Wide Dynamic Range	No
Digital Slow Shutter	Yes
Day & Night	Yes
I/O Interface	
Analog Video Output	BNC connector x 1

Pan / Tilt	
Pan movement	0° ~ 360° continuous endless
Tilt movement	0° ~ 90°
Pan manual speed	0.5°/Sec to 80°/Sec vari-speed
Tilt manual speed	0.5°/Sec to 40°/Sec vari-speed
Preset	64 preset point
Preset Speed	180° per second
Power	
Power	20Vac ~40Vac, 24Vac (Power consumption 45W)
Operating environment	
Operating Temperature	-40 °C ~ 50 °C (-40 ~ 122°F)
Storage Temperature	-40 °C ~ 85 °C (-40 ~ 185°F)
Humidity	5% ~ 95%
Dimension (Ø x H)	Outdoor: 246 mm x 306 mm Indoor: 175mm x 233mm
Outdoor Protected	IP 66 to DIN EN 60529
EMI	
CE, UL	

Dimensions:



WH™
WORLD HELMSMAN



World Helmsman Technology Co., Ltd.

3F-5, No. 81, Sec. 1, Hsin Tai Wu Rd., Hsichih,
Taipei Hsien 22101, Taiwan

Tel: +886-2-2906-0816 Fax: +886-2-2904-1360

www.wh-tech.com / Email: sales@wh-tech.com

■ DISTRIBUTED BY **CE FC**

